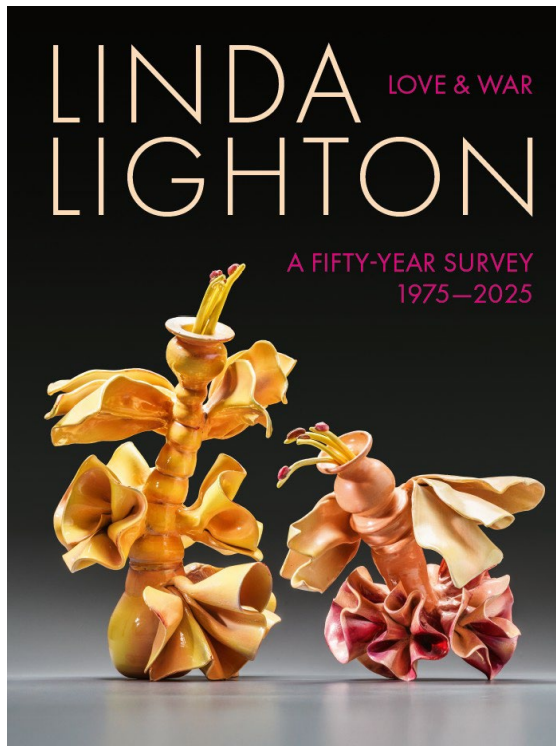


Linda Lighton: Love & War Book Launch – Sep. 17, 2025

Aug. 13, 2025



Left: Linda Lighton, *Nude Descending a Staircase*, 2007, glazed earthenware with china paint and luster, 18 x 11 ½ x 5 ½ in. Collection Shook, Hardy, & Bacon L.L.P.

Right: Linda Lighton, *Tinkerbelle*, 2007, glazed earthenware with china paint and luster, 14 ½ x 13 x 12 in. Courtesy the Artist

OVERLAND PARK, Kan. – [The Nerman Museum of Contemporary Art](#) at Johnson County Community College is proud to announce the *Linda Lighton: Love & War, A Fifty-Year Survey, 1975-2025* book launch occurring at the Nerman Museum's Café Tempo on [Wednesday, September 17, 2025, from 5-8 p.m.](#)

This monography is accompanied by an exhibition by the same name that will be opening to the public at the Nerman Museum on December 13, 2025.

Linda Lighton: Love & War, A Fifty-Year Survey, 1975-2025, is a 208-page book, published and internationally distributed by Hirmer. Attendees will be able to purchase their own copy of the book, priced at \$50. This richly illustrated monograph gives a comprehensive overview of her pioneering body of work, which pushes the boundaries of ceramic sculpture.

For fifty years, American artist Linda Lighton (b. 1948) has created a powerful body of subversive ceramic sculptures that explore desire in all its complex forms. Her work uses wit and seduction as conceptual weaponry to mine the relationships between sex, power, and politics.

As a Kansas City native, Lighton offers a perspective on the American cultural landscape from the country's center—an important distinction from the predominantly coastal focus in art discourses. Her work addresses universal experiences, yet her life story tells a unique narrative of rebellion and activism. Particularly, Lighton challenges long-standing expectations for women, exploring gender inequality concerns alongside strident critiques of gun violence and environmental degradation. As the first-ever major museum survey of her work, *Love & War* highlights this singular artist's continued insistence on the joyousness of life amidst social and political struggles.



Born into an affluent Midwestern family, Lighton could have taken the straightforward route and followed her father's ambitions for her to marry well and become a housewife—a continuation of social ideals from an earlier generation. Instead, Lighton rejected this trajectory, insisting on her own desire to become an artist. When this was met with refusal, she left home, helped publish a leftist newspaper, got married, had a child, joined a commune on a Native American reservation in Washington State, where she lived without running water or electricity, and built an eight-sided log cabin by hand—all before the age of 25.

BOOK SPONSORS:

- Jeffrey D. Byrne
- Scott Francis, Francis Family Foundation
- Dennis and Carol Hudson Family Foundation
- R.C. Kemper, Jr. Charitable Trust and Foundation

Linda Lighton: Love & War will be on view from December 13, 2025, through May 3, 2026, in the Oppenheimer, Thompson, and Anonymous Galleries on the first floor of the Nerman Museum.

ABOUT THE NERMAN MUSEUM OF CONTEMPORARY ART

The Nerman Museum of Contemporary Art at Johnson County Community College (JCCC) serves as a cultural leader, facilitating deeper understanding of our world and contemporary issues through their exhibitions and permanent collection. The collection focuses on international, national, and regional contemporary artists, with an emphasis on diverse practitioners and educational access. In addition to gallery spaces within the Nerman Museum, over 300 works from the collection are installed across campus, integrating art into the daily lives of the JCCC campus community as well as greater Kansas City area residents and visitors.

The Nerman Museum is located on the JCCC campus at 12345 College Blvd., Overland Park, KS. It is open to the public on Tuesdays, Fridays, and Saturdays from 10 a.m. to 5 p.m., on Wednesdays and Thursdays from 10 a.m. to 8 p.m., and on Sundays, from noon to 5 p.m. Admission is free. For more information about the museum, call 913-469-3000 or visit nermanmuseum.org.