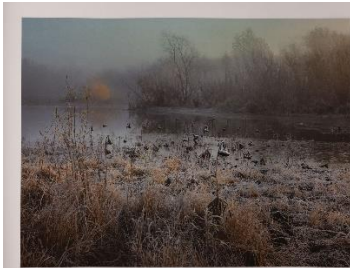


For Immediate Release  
May 15, 2024

Contact: **Lauren Tucci- Gallery Director**  
E: [lauren@gildedpeargallery.com](mailto:lauren@gildedpeargallery.com)  
P: 319-366-0205 (Mon- Fri: 10am-5pm)

---

**Main Floor Exhibitions:** *Protected Landscapes: External & Internal* by Randy Richmond  
*Midwest Landscapes* by Audrey Brown



1.

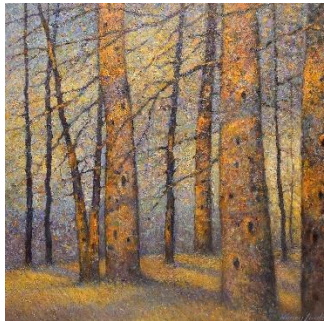


2.



1. Randy Richmond. [left] *Princeton Marsh* 11-11-2023; [right] *10-21-2023, 11:49am*. 22" x 28" each  
2. Audrey Brown. *Untitled Landscape*. 24" x 36"

**2nd Floor Exhibition:** *Brittle Branches* by Nancy Lindsay



3.

3. Nancy Lindsay. *Bare Branches*. 32" x 32"
- 

**Gilded Pear Gallery**  
808 3<sup>rd</sup> Ave SE  
Cedar Rapids, IA 52403  
(319)-366-0205

Exhibitions on view May 20-July 20, 2024.

Public Reception with the exhibiting artists: **May 31st, 5:00-7:30pm**

Free admission; event details, parking, and gallery information at the bottom of this document.

**Description:** Gilded Pear Gallery is excited to present three summer exhibitions highlighting the landscape: "*Protected Landscapes: External & Internal*" by Randy Richmond and "*Midwest Landscapes*" by Audrey Brown in the Main Gallery. "*Brittle Branches*" by Nancy Lindsay is on display in the 2<sup>nd</sup> Floor Gallery.

**Individual exhibition descriptions below:**

## **Main Floor**

### **"Protected Landscapes: External & Internal" by Randy Richmond**

"At some point during the last couple of years, my still-life work began to influence my landscapes. Spare and barely focused, the still-life work uses light, color, and focus to allow the elements to establish their place in the visual hierarchy. The landscape work began reflecting this same approach, and my point of view became narrower. Influence the other way also became apparent. I started viewing the still-life work as landscapes. Exhibiting them together will start conversations about the relationships, and stories that the still-life work and the landscapes share."

Richmond utilizes a cross-pollination of photographic mediums like ingredients in a photographic cookbook to bring each piece to print. Richmond has shown his work in numerous solo, group, invitational, and juried exhibits nationally, and internationally. He has been represented in eight museum exhibitions including three group exhibits, one invitational exhibit, and one solo exhibition. His interpretation of environmental issues have been the focus of special exhibits created for the Door County Land Trust (WI.), the Keeweenaw Land Trust (MI.), the Iowa Natural Heritage Foundation (IA.), and the Nahant Marsh (IA.). He balances his creative time with teaching photography as an adjunct instructor at St. Ambrose University in Davenport, Iowa.

--[www.gildedpeargallery.com/protected-landscapes](http://www.gildedpeargallery.com/protected-landscapes)

### **"Midwest Landscapes" by Audrey Brown**

"I approach landscape painting as a process of combining materials, time and thought. Before the painting becomes physical, the process starts with an exploration of place, and time. That exploration is sometimes done over a series of visits during different seasons. This allows me to understand how time of day and weather effect a specific location. River and streams move me, as well as the connection between land and sky. Even though most of my paintings are from locations within a 3-hour drive of my home, creating the painting allows me to spend hours at a time at the location that has become my subject, without leaving my studio."

Audrey Brown has been a working artist for over 20 years. After receiving her Bachelor of Fine Arts degree from Augustana College in Rock Island, Illinois, Ms. Brown began combining her academic education with her long love and experience exploring the natural world around her to create her pastel landscapes. She has since changed to oil as her medium of choice. During the course of her art career Audrey Brown has been the recipient of several awards in both juried exhibits and art fairs throughout the Midwest. Ms. Brown has been chosen to participate in many prestigious regional art fairs from Minneapolis, Minnesota to Kansas City, Missouri.

--[www.gildedpeargallery.com/midwest-landscapes](http://www.gildedpeargallery.com/midwest-landscapes)

## **2nd Floor**

### **"Brittle Branches" by Nancy Lindsay**

"As a landscape painter, I often need a change from a dominant green color palette to something warmer. Trees, without foliage, offer that opportunity. Winter sunlight penetrating through bare branches lends itself to endless color choices. When branches are dormant, gravity directs the branches in a graceful bend. I find that broken, brittle branches have more character and add more interest to a painting. Beauty and imperfection go together. My process is one of adding many more branches than necessary and gradually removing those less important. I find that turning the painting around on all sides as I work, helps me spot places that needed correction. To answer your yearning question: Yes, I do find myself tangled in branches until I paint the final stroke. There is a sense of accomplishment working my way out."

Nancy Lindsay was born in 1948 in Lincoln Nebraska. She studied art at Colorado State University and worked for many years in the commercial printing industry as a designer. While raising three children, she began painting seriously in the 1980's. Encouraged by other artists, she began entering and winning many competitions. Later on, she attended Art Students League of New York and was a student of William Scharf. Moving to Iowa in 1998, she discovered the beauty of the Iowa landscape. Lindsay currently resides in Anamosa, Iowa, with her husband Lee.

--[www.gildedpeargallery.com/brittle-branches](http://www.gildedpeargallery.com/brittle-branches)



**Gallery operations and features:**

Event: Receptions are open to the public; there are no admission fees.

Visit Us: Drop in anytime during gallery hours: Monday-Friday 10:00am-5:00pm, Saturday 10:00am-2:00pm, and CLOSED on Sunday. Appointments for our services (i.e.-custom framing, art appraisals) are preferred.

Features: A limited parking lot is available next to the building with 1 handicap space. On street parking is available on 3rd Avenue and 8th Street- non-metered. The MedQuarter features protected bike lanes and bicycle "parking" can be found on the opposite side of the building by the Pocket Park on 3rd and 8th.